

SX7E

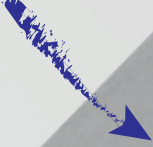


- Explosion proof junction boxes
- Class I, Divisions 1 & 2, Groups C & D;
Class II, Divisions 1 & 2, Groups E, F & D;
Class III
- Copper free aluminium alloy enclosures
- NEMA type 3, 4, 4X, 7 & 9
- Choice of 25 sizes

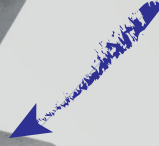
Stainless steel bolts



Grey electrostatic polyester paint.



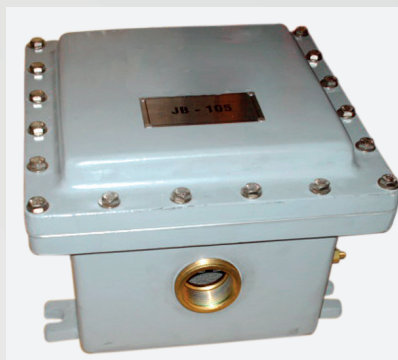
Mounting bracket



*Hazardous locations,
dust tight, watertight
junction boxes*



*Identification tag in
according to customer
specifications*



*Assembled electrical
equipment*



SX7E... series Aluminium junction boxes UL certified

SX7E...series junction boxes are UL certified. Available in many different dimensions, they are used either as junction boxes with/without terminals or for installation of electrical equipment such as circuit breakers, signals, disconnectors, remote control switches, transformers, etc.... Body and cover can be drilled and threaded according to customers specification. In accordance with rules, only Cortem can perform the drilling.

Application sectors:



CERTIFICATION DATA FOR EMPTY ENCLOSURES

Classification:	CLASS 1, DIV. 1&2, GROUPS C-D; CLASS II, DIV. 1&2, GROUPS E-F-G; CLASS III		
Certification:	FTRV.E468486		
	FTRV7.E468486 (Certified for Canada)		
Standards:	NEMA 7, NEMA 9, NEMA 4X, NEMA 3, UL 886, UL 1203, NEC Art 500-503		

◀ NEMA 7, NEMA 9, NEMA 4X, NEMA 3.

National Electrical Manufacturers Association

CLASSIFICATION	DEVICE POSITION	PROTECTED CASE BY...
NEMA 7	Internal	Internal explosions per UL Class I, Groups C & D explosion-proof requirements
NEMA 9	Internal	Dust ignition as per UL Class II, Groups E, F, G requirements
NEMA 4X	Internal/External	Falling dirt, windblown dust Rain, sleet, snow Water splashes, direct water from hoses Corrosion Damage from external ice formation
NEMA 3	Internal/External	Falling dirt, windblown dust Rain, sleet, snow

◀ UL 886:

(OUTLET BOXES) Outlet Boxes and Fittings for use in Hazardous (Classified) Locations.

◀ UL 1203:

Explosion Proof and Dust-Ignition-Proof Electrical Equipment for use in Hazardous (Classified) Locations.

SX7E... series Aluminium junction boxes UL certified



MECHANICAL FEATURES

Body and lid:	Low copper content aluminium alloy
Gasket:	Acid, hydrocarbon and high temperature-resistant, located between body and lid
Certification label:	Aluminium label riveted onto lid on other versions
Bolts and screws:	In stainless steel
Earth screws:	On inside and outside of body and on lid complete with anti-rotation brackets
Mounting brackets:	Cast aluminium feet onto body
Mounting plate:	Internal mounting plate in aluminium
Coating:	Polyester coating
Corrosion Resistance:	The STANDARD of the aluminium alloy used by Cortem has passed the tests required by standards EN 60068-2-30 (hot/humid cycles) and EN 60068-2-11 (salt mist tests)

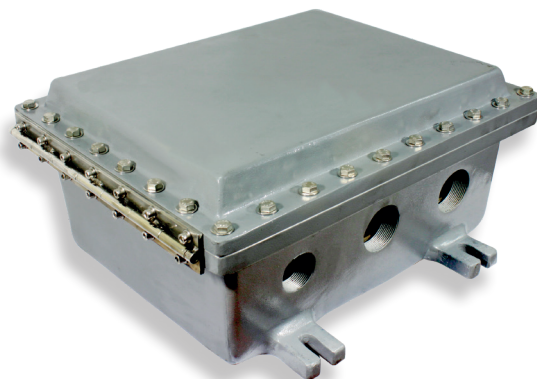
ACCESSORIES AVAILABLE ON REQUEST/ SPECIAL REQUESTS

- Hinges in stainless steel
- Drain and breather valve
- Unions, sealing fittings
- Lid-mounted control and signalling devices, terminals, internal electrical equipments
- External polyester coating in different colour (specify the RAL number)
- Breather valve and/or drain valve
- Round or rectangular windows on lid
- Hinges on the short side
- Switch racks
- Full voltage motor starters
- Star-Delta motor starters
- Manual motor starters
- Circuit breakers
- Control stations
- Terminal blocks junction boxes
- Lighting pole splite boxes
- Pilot lights
- Power distribution panel boards
- Lighting panel boards

MAXIMUM DIAMETER THREADED NPT (INCHES)

Code	ØNPT	Code	ØNPT
SX7E 644	2"	SX7E GC8	4"
SX7E 664	2"	SX7E GG6	4"
SX7E 666	2"	SX7E GE9	4"
SX7E 864	2"	SX7E GF6	4"
SX7E 883	2"	SX7E IC8	4"
SX7E 884	2"	SX7E IIC	4"
SX7E 888	2"	SX7E KK8	4"
SX7E A66	2"	SX7E OCC	4"
SX7E 866	4"	SX7E OF6	4"
SX7E AA6	4"	SX7E SG8	4"
SX7E C56	4"	SX7E SGD	4"
SX7E FC6	4"	SX7 XCD	4"
SX7E GC6	4"		

BODY DRILLING EXAMPLE



SX7E... series Aluminium junction boxes UL certified

Code	External dimensions	Internal dimensions	Internal dimensions with	Fixing	Weight
	mm	Inches	ribs	mm	
	A x B x C	L x W x H	L1 x W1 x H1	D x E x F	Kg
SX7E 644	243 x 193 x 169	6" x 4" x 4" 154 x 105 x 102	-	179 x 89 x 14	6,1
SX7E 664	243 x 243 x 180	6" x 6" x 4" 154 x 154 x 107	-	229 x 78 x 14	8,6
SX7E 666	267 x 267 x 233	6" x 6" x 6" 154 x 154 x 150	-	235 x 114 x 15	9,0
SX7E 864	248 x 302 x 157	8" x 6" x 4" 205 x 152 x 105	-	207 x 125 x 15	11,0
SX7E 883	307 x 307 x 157	8" x 8" x 3" 220 x 218 x 87	-	285 x 123 x 13	9,40
SX7E 884	292 x 292 x 165	8" x 8" x 4" 204 x 205 x 108	-	247 x 127 x 12	11,0
SX7E 888	291 x 291 x 280	8" x 8" x 8" 205 x 204 x 200	-	270 x 117 x 16	13,0
SX7E A66	254 x 355 x 220	10" x 6" x 6" 252 x 152 x 155	-	217 x 135 x 15	13,5
SX7E 866	288 x 239 x 217	8" x 6" x 6" 207 x 156 x 152	-	231 x 130 x 14	11,3
SX7E AA6	351 x 356 x 230	10" x 10" x 6" 261 x 258 x 154	-	332 x 138 x 13	20,5
SX7E C56	237 x 402 x 241	12" x 5" x 6" 300 x 136 x 157	-	212 x 194 x 14	17,0
SX7E FC6	403 x 474 x 241	15" x 12" x 6" 375 x 304 x 157	-	356 x 265 x 18	44,0
SX7E GC6	503 x 400 x 238	16" x 12" x 6" 409 x 306 x 155	-	350 x 271 x 14	43,8
SX7E GC8	400 x 503 x 238	16" x 12" x 8" 411 x 308 x 202	-	378 x 271 x 14	45,0
SX7E GG6	500 x 500 x 218	16" x 16" x 6" 405 x 405 x 151	-	490 x 275 x 14	46,8
SX7E GE9	466 x 504 x 308	16" x 14" x 9" 406 x 368 x 224	-	462 x 298 x 14	58,6
SX7E GF6	475 x 503 x 230	16" x 15" x 6" 409 x 381 x 149	-	471 x 246 x 14	44,8
SX7E IC8	570 x 419 x 279	18" x 12" x 8" 470 x 319 x 204	470 x 253 x 178	415 x 289 x 14	55,2
SX7E IIC	570 x 566 x 390	18" x 18" x 12" 466 x 470 x 302	466 x 403 x 276	566 x 346 x 14	92,9
SX7E KK8	612 x 613 x 283	20" x 20" x 8" 513 x 512 x 201	448 x 448 x 175	670 x 307 x 14	93,2
SX7E OCC	406 x 706 x 402	24" x 12" x 12" 606 x 306 x 303	606 x 239 x 277	410 x 375 x 14	86,2
SX7E OF6	488 x 712 x 242	24" x 15" x 6" 612 x 388 x 152	612 x 324 x 126	488 x 466 x 14	78,4
SX7E SG8	510 x 816 x 293	28" x 16" x 8" 716 x 410 x 200	716 x 346 x 174	504 x 543 x 14	97,5
SX7E SGD	518 x 824 x 458	28" x 16" x 13" 716 x 410 x 355	716 x 340 x 329	509 x 543 x 14	125,8
SX7E XCD	424 x 947 x 439	33" x 12" x 13" 839 x 316 x 343	839 x 246 x 317	417 x 684 x 18	151,0

