

# LHL

- Zone 1, 2, 21, 22
- LED lamp
- Energy saving
- Lightweight and ergonomic
- Lighting comfort



*Transparent tube  
in polycarbonate*

*LED circuit sealed with  
transparent resin*



*PVC handle grip*



*Stainless steel hook*

# LED hand-lamp LHL-...P series

The hand-lamp LHL-...P series for LED tubes of 9/17 Watt have been designed for the work of inspection and maintenance in all those potentially explosive places for the presence of gas and dust as petrochemical industries, off-shore facilities, the areas of tank control and the process areas.

They are robust and easy to handle at the same time with a high degree of IP protection and excellent performance in light output.

The LED modules used for LHL-...P series hand-lamp allow to get an excellent color spectrum thanks to the type of light emitted by the LED.

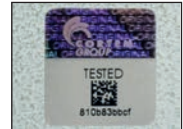
## Application sectors:



## CERTIFICATION DATA

<b>Classification:</b>	Group II	Category 2GD		
<b>Installation:</b> EN 60079.14	zona 1 - 2 (Gas)	zona 21 - 22 (Dust)		
<b>Marking:</b>	II 2 G Ex e mb IIC T5/T4 (Gb)			
	II 2 D Ex mb IIIC T95°C/T130°C (Db) IP66			
<b>Certification:</b>	ATEX	CEC 13 ATEX 043		
<b>Standards:</b>	CENELEC EN 60079-0: 2009; EN 60079-7: 2007; EN 60079-18: 2009; EN 60079-31: 2009			
<b>Class temperature:</b>	135°C (T4)	100°C (T5)		
<b>Ambient temperature:</b>	-20°C  +50°C	Special -20°C  +60°C		
<b>Degree of protection:</b>	IP66			

## LED hand-lamp LHL-...P series



ORIGINAL PRODUCT

### MECHANICAL FEATURES

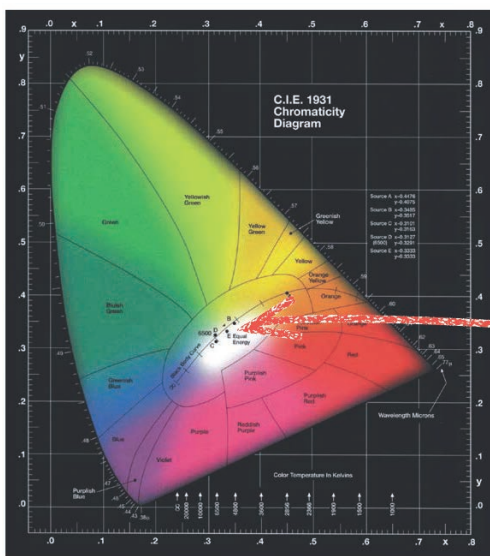
<b>Body:</b>	Transparent tube in polycarbonate, V0 (UL94) resistant to shock and UV rays
<b>Handle:</b>	Non-slip P.V.C. (polyvinyl chloride plasticized with non-toxic plasticizers)
<b>Mounting:</b>	Hand-held lamp with stainless steel hook
<b>Cable gland:</b>	Model UNI01 in polyamide

### ELECTRICAL FEATURES

<b>Power supply:</b>	24 Vdc
<b>Cable:</b>	H07RN-F 2x1 mm <sup>2</sup> lenght 5 m
<b>LED source:</b>	Module with 72 LED)
<b>Lifetime:</b>	> 50.000 hours

### ACCESSORIES AVAILABLE / SPECIAL REQUESTS


Different cable lengths



	LHL-10P	LHL-20P
<b>Luminous flux (lm)</b>	790	1580
<b>Colour rendering index (Ra)</b>	80	80
<b>Luminous efficiency (lm/w)</b>	87,78	92,94

The color temperature of the light produced is around 5500 K, almost the color temperature of day-light.  
The pure white, also called achromatic point of reference corresponding to the point of equal energy in the C.I.E. diagram, is placed between 5455 K and 5500 K.

## LHL-...P series selection chart

Code	Dimensions mm L	Type Lamp	Power supply	Watt	Class Ta =+40°C	Class Ta =+50°C	Class Ta =+60°C	Weight kg	 mm
LHL-10P	475	LED	24 Vdc	9	T5	T5	T4	1,4	
LHL-20P	760	LED	24 Vdc	17	T5	T5	T4	2,3	

### DIMENSIONAL DRAWING

