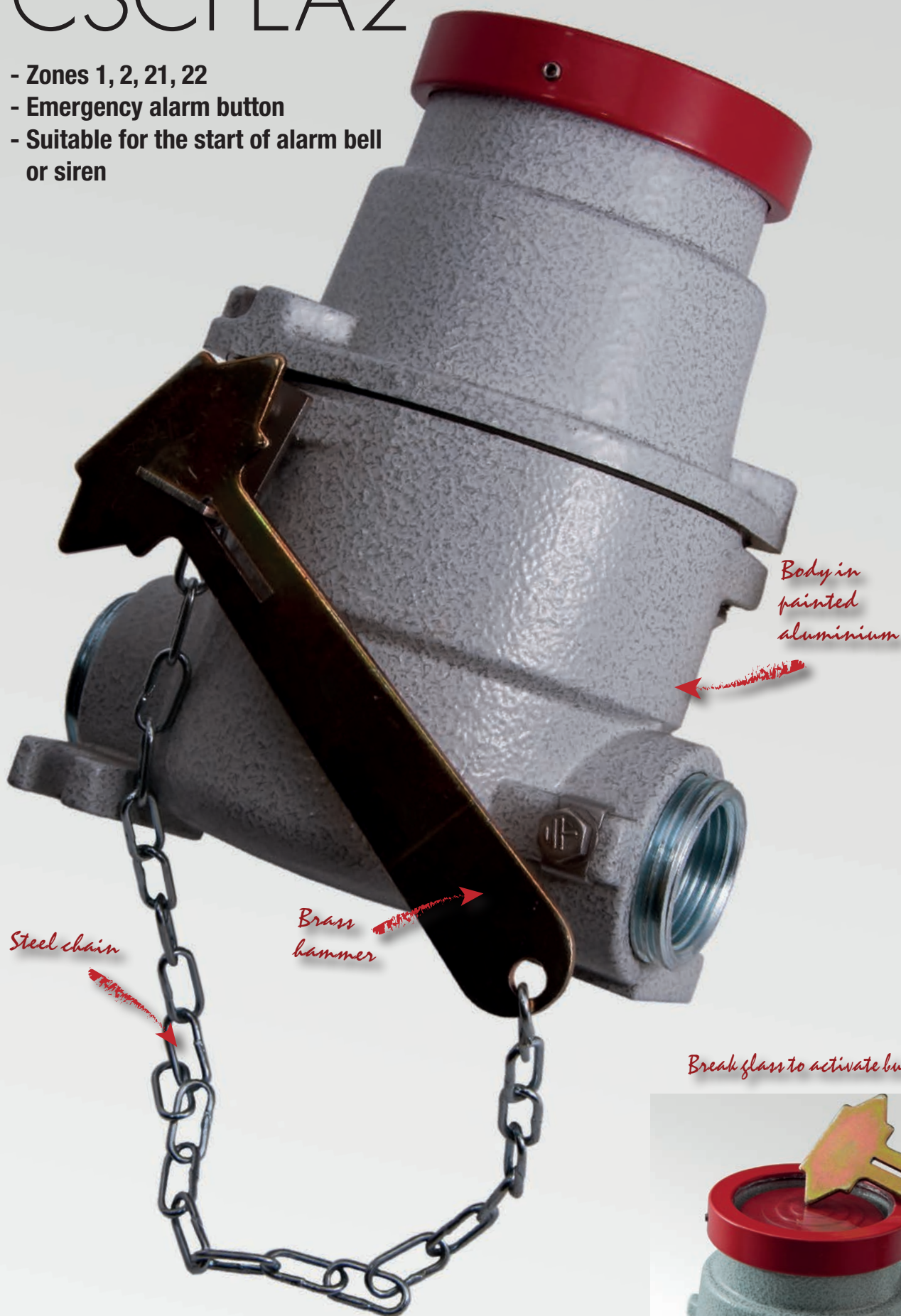


CSCPEA2

- Zones 1, 2, 21, 22
- Emergency alarm button
- Suitable for the start of alarm bell or siren



Break glass to activate button



CSCPEA2 Emergency alarm button

CSCPEA2 emergency alarm button with its glass protective cover is the ideal solution for setting off audible/visual alarms in the event of danger. The device comes complete with a hammer for breaking the glass. The emergency button is kept pressed by the actual glass. The contacts change when the glass is broken and the button is released automatically.

Application sectors:



CERTIFICATION DATA

Classification:	Group II	Category 2GD		
Installation: EN 60079.14	zone 1 - zone 2 (Gas)	zone 21 - zone 22 (Dust)		
Marking:	CE Ex II 2 GD Ex d IIC T6 Ex tD A21 IP66			
Certification:	ATEX CESI 01 ATEX 092			
	ATEX TSA 06.0009			
	TR CU AVAILABLE	All TR CU certification data can be downloaded at www.cortemgroup.com		
Standards:	CENELEC EN 60079-0: 2006, EN 60079-1: 2007, EN 61241-0: 2006, EN 61241-1: 2004 and EUROPEAN DIRECTIVE 2014/34/UE IEC 60079-0: 2004, IEC60079-1: 2003, IEC61241-0: 2004, IEC 61241-1: 2004			
Class temperature:	85°C (T6)			
Ambient temperature:	Standard -20°C +60°C	Special -50°C +60°C		
Degree of protection:	IP66			

CSCPEA2 Emergency alarm button



ORIGINAL PRODUCT

MECHANICAL FEATURES

Body and cover:	Low copper content aluminium alloy
Glass holder ring:	RAL3000 (Fire red) painted aluminium
Glass:	Transparent breakable glass
Hammer:	In brass with steel chain
Emergency button:	Resistant nylon
Gaskets:	Acid/hydrocarbon resistant NBR. For temperatures of -50°C, silicone gasket
Bolts and screws:	Stainless steel
Mounting:	Two 7x9.5 slots
Entries:	2 x 1" ISO 7/1 complete with type RE32G reduction from 1" to 3/4" ISO 7/1
Coating:	Epoxy coating Ral 7035 (light grey)
Corrosion Resistance:	The STANDARD of the aluminium alloy used by Cortem has passed the tests required by standards EN60068-2-30 (hot/humid cycles) and EN60068-2-11 (salt mist tests)
Contacts	
Contact operation:	low opening
Connection:	2 x 1.5 mm ² screw terminals
Torque setting:	0.8...1.2 N.m
Type of screw head:	Grooved, flat Ø 4 mm / Grooved, flat Ø 5.5 mm Star headed, Pozidriv No 1 / Star headed, Philips No 1
Contact material:	Silver alloy (Ag/Ni)

ELECTRICAL FEATURES

Rated voltage:	max. 600 V
Rated current:	max. 10 A
Rated frequency:	50/60 Hz
Operating current:	AC-15, A600 : Ue = 600 V Ie = 1.2 A AC-15, A600 : Ue = 240 V Ie = 3 A AC-15, A600 : Ue = 120 V Ie = 6 A
Board: Std contacts:	1No + 1Nc


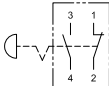
ACCESSORIES AVAILABLE / SPECIAL REQUESTS

Cable gland: FGAB2BK for armoured cable or FB2BK for non-armoured cable

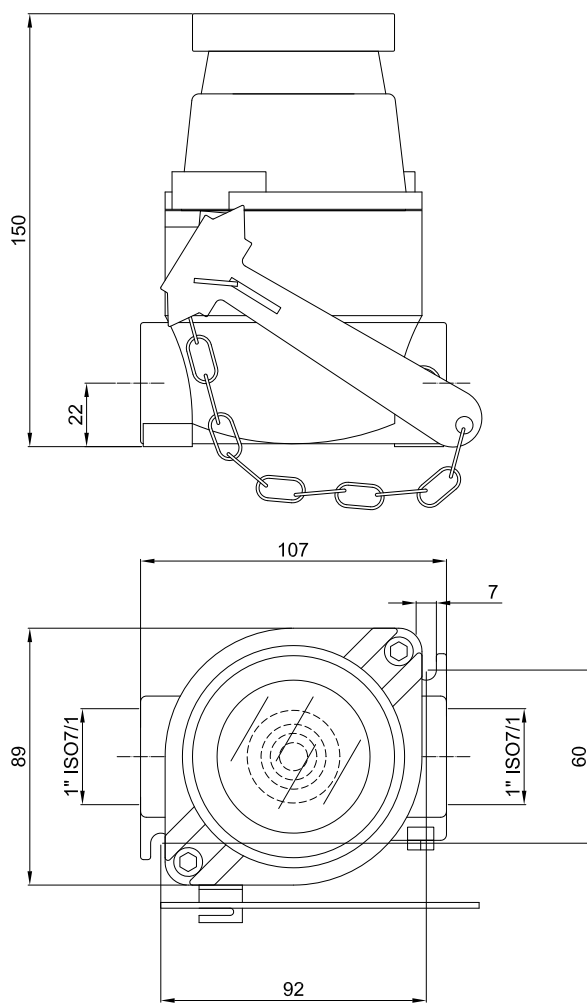
Plug: PLG2B

Ex d IIB marking with CSE housing complete with glass protection, hammer and red button M-0429 with 1NO + 1NC contacts (code **CSEPEA-2M**)




CSCPEA2 Emergency alarm button

Code	∅ Glass protection mm	Board	Weight kg	 mm
CSCPEA2	53		1,1	260x180x130

DIMENSIONAL DRAWINGS



Dimensions in mm

ILLUSTRATION	DESCRIPTION	MODEL	FEATURES	CODE	KEY
	Glass protection		Red painted aluminium ring Non-tempered glass	M-0521	
	Cable gland	3/4" ISO 7/1	std. range cable 12-17	NAV2B NEVB2B	